

UNIT - User Guide

October 2019

GENERAL TIPS

UNIT is designed to be simple to use. There is a lot of data in the background, and this can cause some of the features to be slow to load, especially the map.

Whilst some features are set up to print, a useful technique would be to take screenshots of charts, maps, etc. The way to do this varies depending on your operating system:

Mac: CMD + CTRL + SHIFT + 4

Windows: PrtSc

After doing each of these, paste (CMD / CTRL + V) the image into Word, Powerpoint or similar.

LANDING PAGE

To access UNIT - go to <http://yuf.org.uk/unit> and enter your username and password.

If you don't have a username and password, please contact Youth United to request an account.


Once logging in, you will see this screen:

unit WELCOME MAP REPORTS DATATABLE POSTCODE LOOKUP LOCAL AUTHORITY PROFILES ABOUT


Data about uniformed youth groups in the UK

This tool provides access to data about the >40,000 uniformed youth groups across the UK, as well as information about the areas they are situated in. To get started - try the tabs along the top, read the documentation, or watch the video below.


If you have any questions, comments, or suggestions for how this tool can be improved, or to request the addition of a new user, please contact us at youth.united@yuf.org.uk, 0207 401 7601



Maps showing the numbers of uniformed youth units across the country

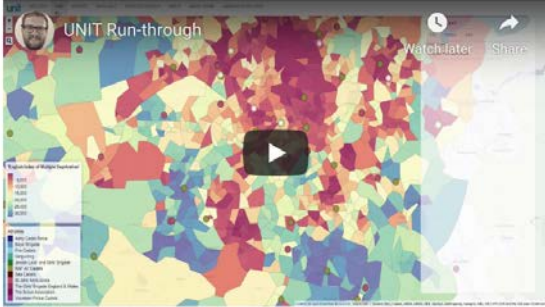


Data layers provide additional information about areas, such as the indices of deprivation, demographics, and worklessness



Zoom to small areas to see the local context of individual units

Watch a short video highlighting some of the key features of UNIT:

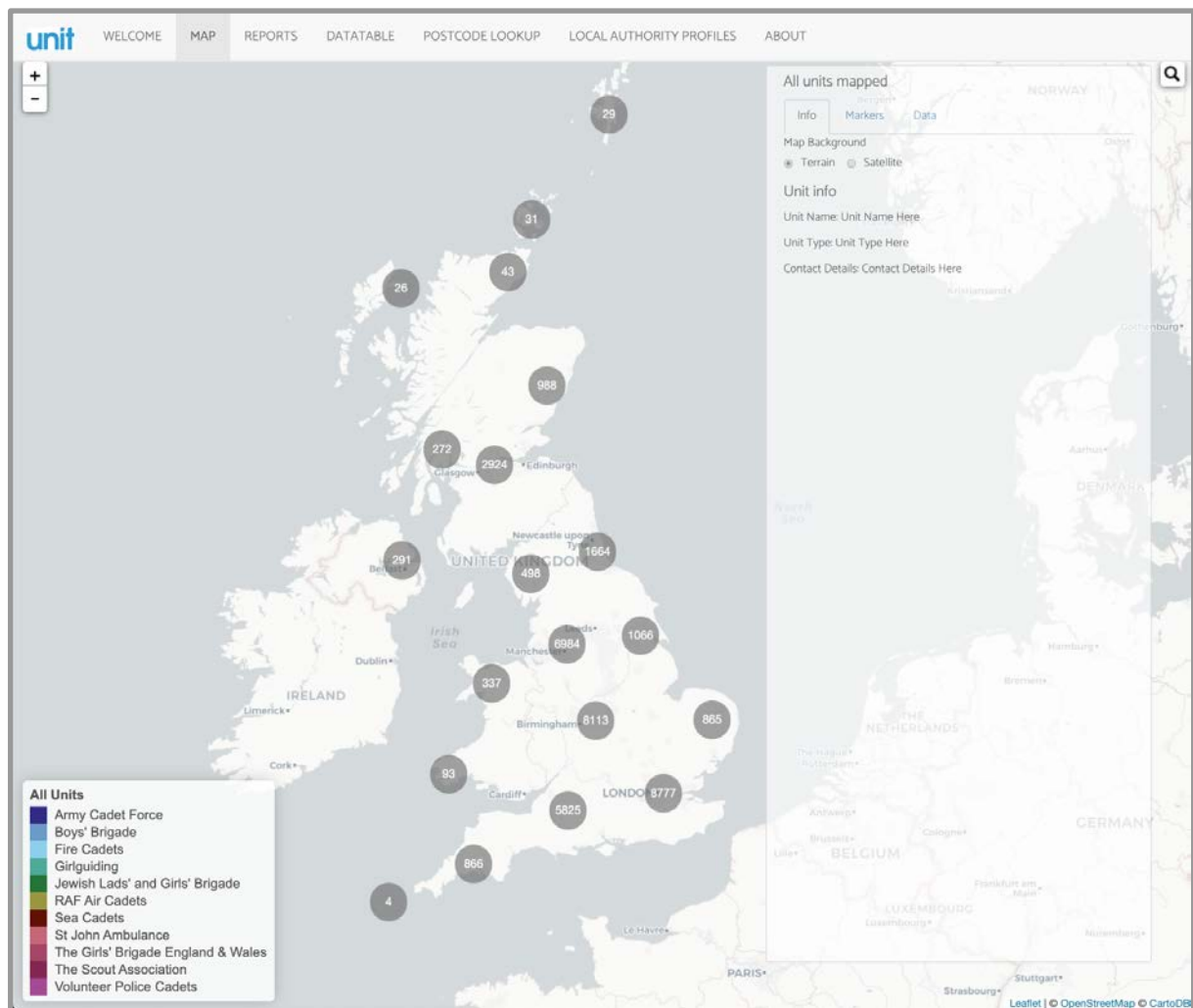


Youth United HQ | 202 Lambeth Road | London | SE1 7JW

Landing page

Watch a short 5 minute YouTube video highlighting some of the features of UNIT, or get straight into the tools.

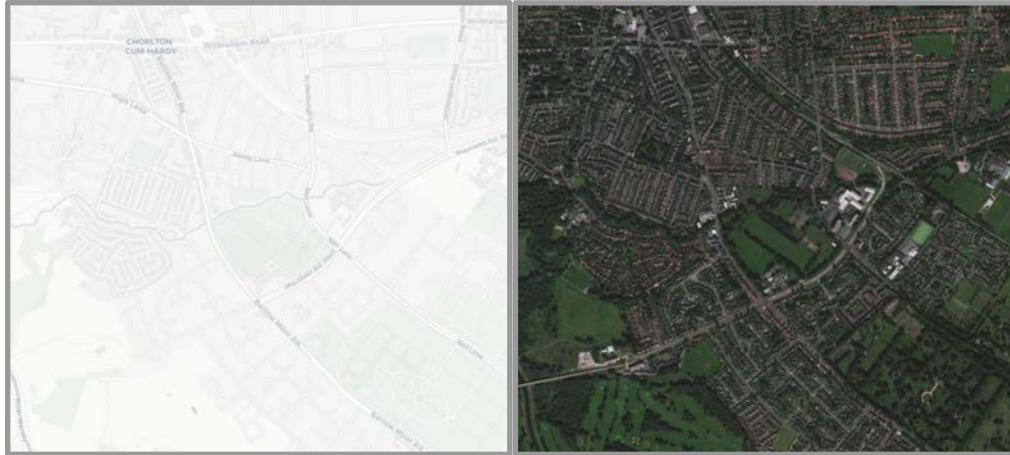
MAP



All units in the UK (clustered)

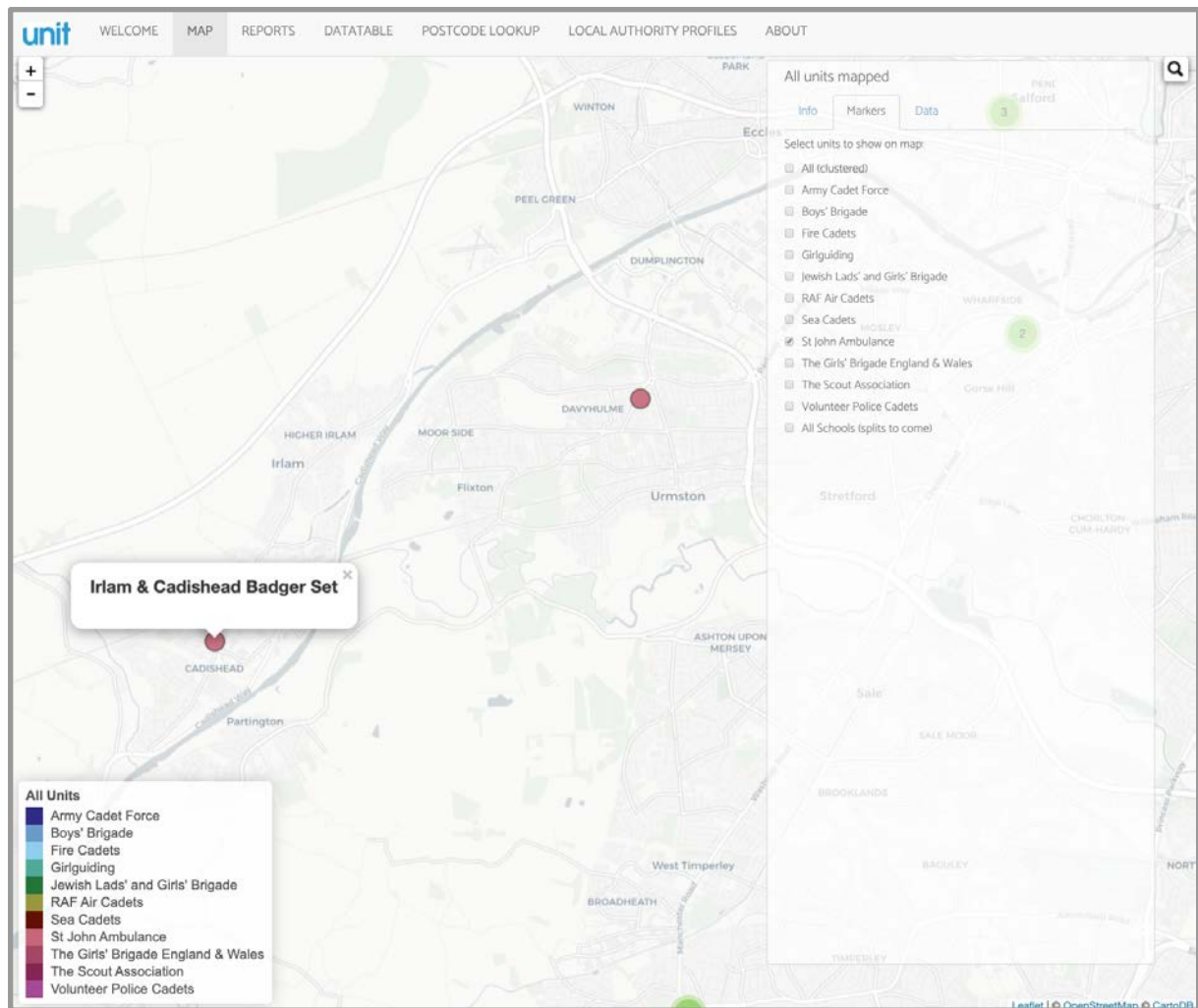
The map shows all units from the 11 partner organisation of Youth United. The map works in the same way as Google maps, with panning and zooming using mouse, keys ('+' and '-', and the arrow keys), or on-screen buttons.

Use the Info tab sidebar on the right-hand-side of the screen to change the background of the map - alternating between an unobtrusive street view, and satellite imagery.



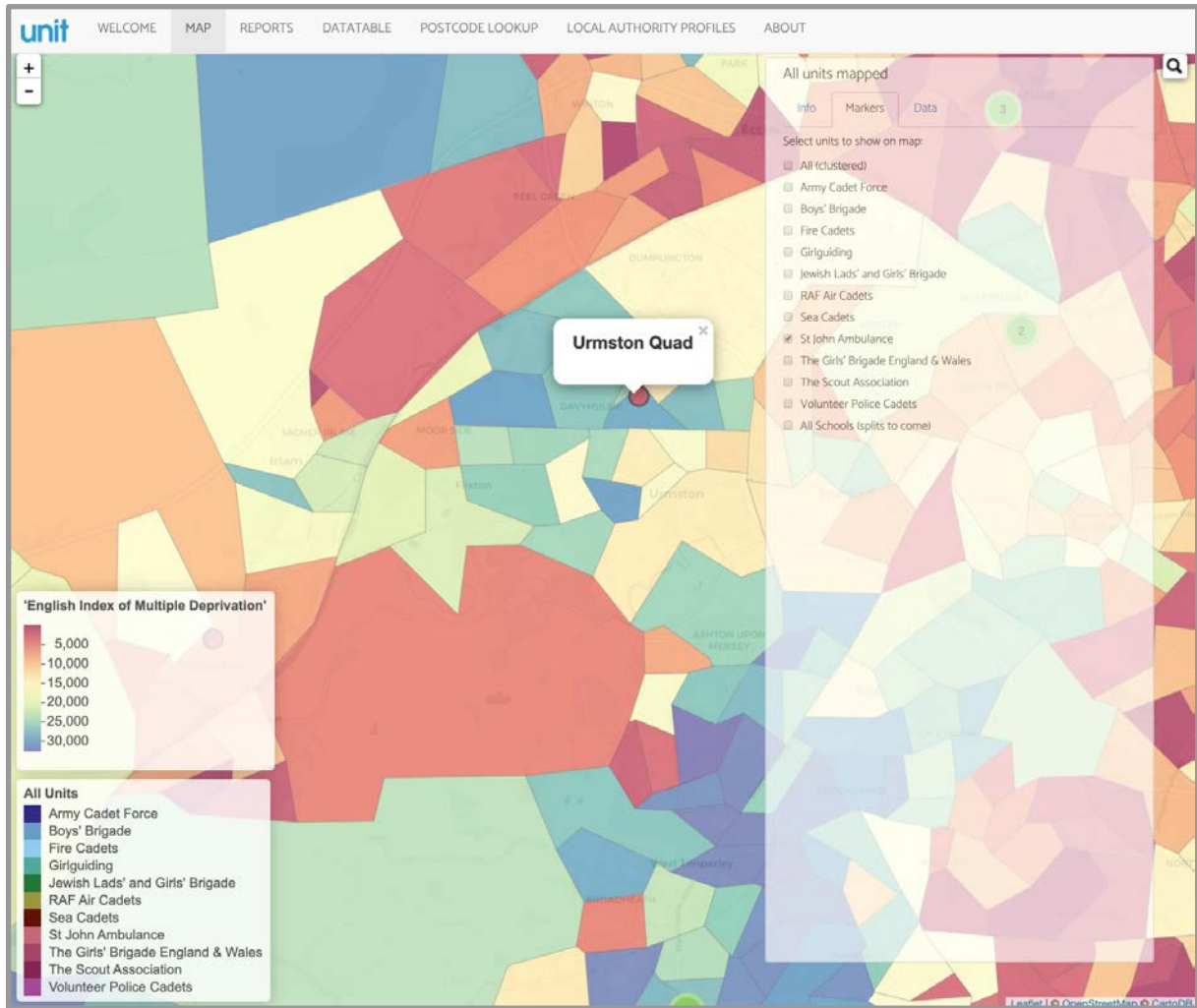
These views provide useful context when looking at particular units. Being able to see at a glance whether a unit is in a rural area, or the suburbs, or inner city, or by the coast can be valuable.

Choosing the Markers tab allows you to select / deselect different organisations map markers. Each organisation has a different coloured marker to help differentiate them. Clicking a marker will show the name of the unit.

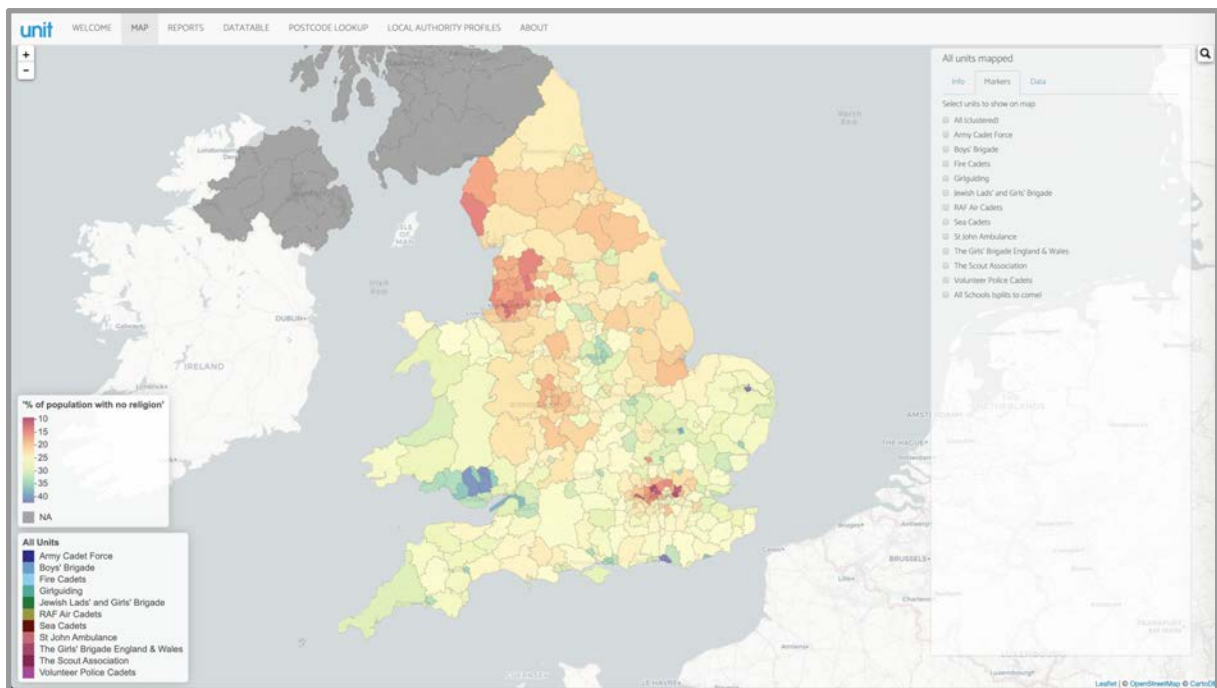


St John Ambulance units in South-West Manchester

As well as markers, there is also the ability to add some data layers to the map. To do this, select the Data tab, and choose a data layer to display on the map. Note that some layers can take a long time to load, due to the amount of data being transferred to the web browser.



St John Ambulance units in South-West Manchester with deprivation map layer



Proportion of people with no religion in local authorities

REPORTS

This section provides access to a selection of tables of data about uniformed youth groups. Use the selectors to choose whether to display counts of units by different geographical boundary types, or a list of all units showing their deprivation rank.

Use the page controls in the bottom right corner of the table to scroll through the data.

	LAD16NM	Army Cadet Force	Boys' Brigade	Fire Cadets	Girlguiding	Jewish Lads' and Girls' Brigade	RAF Air Cadets	Sea Cadets	St John Ambulance	The Girls' Brigade England & Wales	The Scout Association	Volunteer Police Cadets
1	Aberdeen City	7	21	0	110	0	4	2	0	0	16	1
2	Aberdeenshire	12	18	0	252	0	10	3	0	0	42	1
3	Adur	1	2	0	21	0	2	0	0	1	7	0
4	Allerdale	6	1	1	38	0	1	2	2	1	13	0
5	Amber Valley	4	2	0	64	0	3	0	1	0	19	0
6	Angus	9	6	0	105	0	4	2	1	0	20	1
7	Antrim and Newtownabbey	6	0	1	3	0	2	0	3	0	1	0
8	Ards and North Down	9	2	2	3	0	2	4	3	0	1	0
9	Argyll and Bute	9	5	1	73	0	2	4	0	0	10	0
10	Armagh City, Banbridge and Craigavon	9	1	0	7	0	2	0	7	0	5	0

Count of units by local authority

The tables have a search facility in the top right of the table, where it is possible to search for places.

DATATABLE

This section provides access to a datatable of all units in the database.

unit WELCOME MAP REPORTS DATATABLE POSTCODE LOOKUP LOCAL AUTHORITY PROFILES ABOUT

Show 10 entries Search:

Name	Association	Ward	Local Authority	Constituency	IMD Rating	Funded?
<input type="text" value="All"/>	<input type="text" value="All"/>	<input type="text" value="All"/>	<input type="text" value="All"/>	<input type="text" value="All"/>	<input type="text" value="All"/>	<input type="text" value="All"/>
Antrim	Army Cadet Force		Antrim and Newtownabbey	South Antrim	3.Silver	existing
833 Antrim	RAF Air Cadets		Antrim and Newtownabbey	South Antrim	2.Gold	existing
Peninsula	Army Cadet Force		Ards and North Down	Strangford	2.Gold	existing
Peninsula Explorers	The Scout Association		Ards and North Down	Strangford	2.Gold	UYSAF
1st Newtownards	Boys' Brigade		Ards and North Down	Strangford	1.Platinum	UYSAF
2241 Regent House School	RAF Air Cadets		Ards and North Down	Strangford	1.Platinum	existing
1st Newtownards	Boys' Brigade		Ards and North Down	Strangford	1.Platinum	UYSAF
Comber	Army Cadet Force		Ards and North Down	Strangford	4.Bronze	existing
Donaghadee	Army Cadet Force		Ards and North Down	North Down	3.Silver	existing
Movilla	Army Cadet Force		Ards and North Down	Strangford	3.Silver	existing

Showing 1 to 10 of 39,696 entries

Previous 2 3 4 5 - 3970 Next

[Download Filtered Data](#)

Big list of units

This table is fully searchable, filterable and sortable. Use the controls at the top to do this.

Clicking the Download Filtered Data button will save the current view of the datatable as a .csv file - able to be opened in Microsoft Excel or other text editing software.

POSTCODE LOOKUP

Development paused

LOCAL AUTHORITY PROFILES

UNIT has English local authority profiles built in. To generate a profile for a local authority, select one from the drop-down menu. Because of the amount of data being generated, the profile can take some time to generate. Clicking print page in your browser will allow you to print the profile. Depending on your browser, you may also be able to print the profile to pdf for emailing to other people.

Generate a profile of a Local Authority (England)

Local Authority
Ribble Valley

Make profile

These local authority profiles take data from a range of sources to present an overall picture of the characteristics of the local authority area, compared to the rest of England.

Datasets will be updated as new data is released, and new datasets will be added periodically. To request additional datasets, please contact Youth United.

These profiles are currently available for England only. Scotland, Wales and Northern Ireland to follow.

Context

The map shows where this local authority is in the country (highlighted in green).



Demographics

Ethnicity

Ethnicity data is drawn from the most recent census. The census in the United Kingdom was last carried out in 2011, and are conducted every ten years. In the census, people are asked complete a detailed questionnaire, based on their situation at the time of the census. On the questionnaire, people self-select their ethnicity. Data is analysed and aggregated, and the data is published by the Office for National Statistics.

Because the census is only conducted every ten years, ethnicity data can be quite out-of-date.

The table and chart below show the percentages of people in this local authority area who are in each ethnic group, compared to the whole of England.

Ethnicity Table

Ethnicity	Ribble Valley	England
White (UK)	95.84	79.75
White (Irish)	0.58	0.98
White (Gypsy/Irish traveller)	0.01	0.1
White (other)	1.42	4.58
Mixed (White and Black Caribbean)	0.16	0.78
Mixed (White and Black African)	0.06	0.3
Mixed (White and Asian)	0.29	0.63
Mixed (Other)	0.12	0.53
Asian / Asian British (Indian)	0.36	2.63

Part of the local authority profile section

